

## What to do BEFORE flooding occurs?

If there is an **imminent** risk that gas appliances will be affected by a flood, or if you have to evacuate your home:

- 1 Call Énergir Emergency Service at **514 598-3111** or **1 800 361-8003**
- 2 Close the main shutoff valve (see illustrations on back)

---

## What to do AFTER a flood?

- 1 Call an **Énergir Certified Natural Gas Partner (CNGP)**

Find one in your area:  
**energir.com/cngp**

- 2 Call Énergir Customer Service at **514 598-3222**, or **1 800 361-4568** to have a technician reopen the valve and check the equipment

## Always use the services of a qualified heating contractor

Do not try to restart your natural gas appliances yourself.

Do not use natural gas appliances that have been affected by water before they have been checked by a qualified contractor.



## Reminder

If you smell gas, here's what to do:

- 1 Do not smoke
- 2 Open the doors and windows
- 3 Do not touch anything that could cause a spark, or an electrical switch or a cell phone
- 4 Leave the building and call **911**

If this service is not available in your area, call

**1 800 361-8003**

For more information

**energir.com**

**msp.gouv.qc.ca**

(Civil Protection section)

# In case of flooding or water damage

## How to protect natural gas equipment

## How to close the main shutoff valve

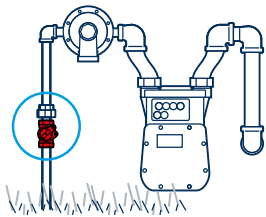
Your equipment may differ from the illustrations.



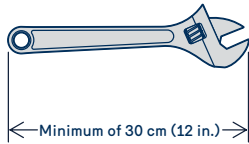
For your safety,  
**NEVER REOPEN  
THE VALVE.**  
Leave that to Énergir!

Call Énergir Customer  
Service at 514 598-3222,  
or 1 800 361-4568.

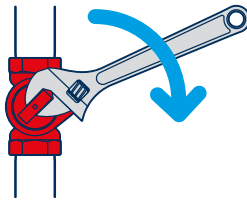
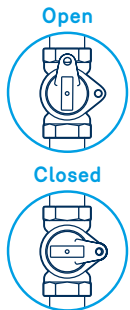
### Wrench-operated valve



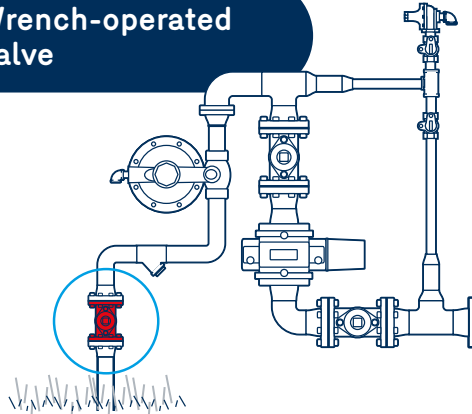
Adjustable  
wrench



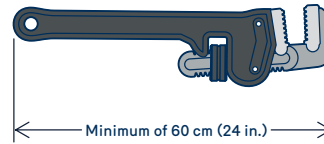
Turn the valve by **one quarter turn  
clockwise or counterclockwise**  
until both holes are aligned.



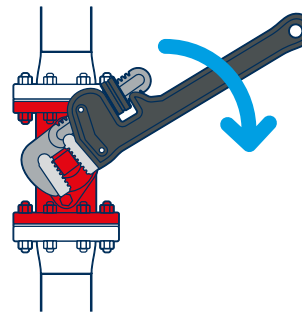
### Wrench-operated valve



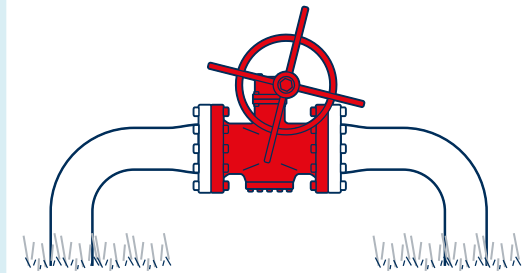
Pipe  
wrench



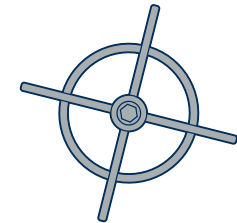
Turn the valve **clockwise** until it is  
fully closed.



### Handwheel-operated valve



Handwheel



Turn the handwheel **clockwise** until  
it is fully closed.

